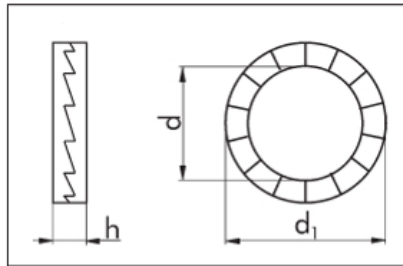
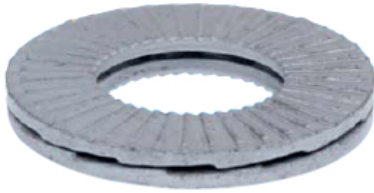


WEDGE LOCK WASHER



Nom. dia.	d in mm	d ₁ in mm	h in mm	Delta Protect (DPE) Art. No.	P. Qty.
M 4	4.4	9	1.7	0401 770 004	100
M 5	5.4	10.8	1.7	0401 770 005	100
M 6	6.5	13.5	2.7	0401 770 006	100
M 8	8.6	16.6	2.7	0401 770 008	100
M 10	10.7	21.0	2.7	0401 770 010	100
M 12	13	25.4	2.7	0401 770 012	50
M 14	15.2	30.7	2.7	0401 770 014	100
M 16	17	30.7	2.7	0401 770 016	50
M 18	19.5	34.5	2.7	0401 770 018	100
M 20	21.4	39	2.7	0401 770 020	50
M 22	23.4	42	3.7	0401 770 022	100
M 24	25.3	48.5	3.7	0401 770 024	50
M 27	28.4	48.5	6.7	0401 770 027	50

Nom. dia.	d in mm	d ₁ in mm	h in mm	A4 (1.4404) Art. No.	P. Qty.
M 6	6.5	13.5	2.7	0404 701 106	100
M 8	8.6	16.6	2.7	0404 701 108	100
M 10	10.7	21.0	2.7	0404 701 110	100
M 12	13.0	25.4	3.7	0404 701 112	50
M 16	17.0	30.7	3.7	0404 701 116	50

For the recommended tightening torques, please see the technical information in the DIN/ISO catalog.

Industry information

Vehicle manufacturing, mechanical engineering, manufacturers of pneumatic and electric tools, mining, agricultural machine manufacturing, manufacturers of mixing systems, transport and conveying systems.

Assortment Parts List	Nom. dia.	Art. No.	P. Qty.
Wedge lock washer Type SF	M 4	0401 780 004	50
	M 5	0401 780 005	50
	M 6	0401 780 006	50
	M 8	0401 780 008	50
	M 10	0401 780 010	25
	M 12	0401 780 012	25
Wedge lock washer Type BF	M 4	0401 770 004	25
	M 5	0401 770 005	25
	M 6	0401 770 006	25
	M 8	0401 770 008	25
	M 10	0401 770 010	25
	M 12	0401 770 012	10

Type BF with enlarged contact surface

Lock washer according to DIN 25201 against unscrewing of laterally loaded, vibrating screw connections subject to oscillations.

Delta Protect (DPE)
Stainless steel A4 (1.4404)

Corrosion resistance:

720 h base metal corrosion according to DIN EN ISO 9227-NSS (DIN 50021-SS) - in comparison: 96 h yellow galvanized (A2C).

Function:

High locking effect due to the ascent of the wedge surfaces between the two lock washers. The screw connection is locked by pretension instead of by friction.

Advantages:

- Maximum safety when locking screw connections.
- No unscrewing during vibration loading and dynamic loads.
- Simple installation and removal.
- No impairment by lubricant.
- Ensures locking function with high and low pretension forces.
- Same temperature range as bolt.
- Protects surfaces.
- Reusable.

Notes on use:

For bolt-nut connections, a wedge lock washer pair must be used both under the bolt head and under the nut.

Wedge Lock Washer Assortment



Art. No. 0964 401 70

P. Qty. 1